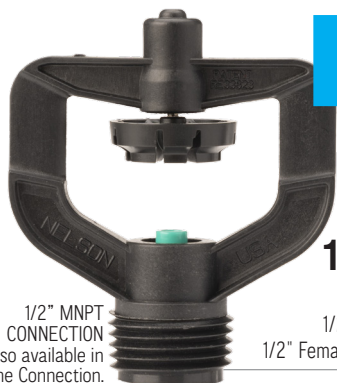




WATER APPLICATION SOLUTIONS FOR THE NURSERY MARKET



MS10 ROTATOR®

15-40 PSI
14-27" RAD.

NOZZLE
13827-X2XX (Assembled)

1/2" MNPT CONNECTION
Also available in Acme Connection.

THREAD
1/2" MNPT = 1
1/2" Female Acme = 2

PLATE
Black, High Angle

EXAMPLE:
MS10 Rotator with 1/2" MNPT (1),
Black Plate (2) and Turquoise #17
Nozzle (17) = #13827-1216

THE MS10 IS A HIGH-VOLUME, MULTI-STREAM, FAST-TURNING ROTATOR® FOR UNIFORM IRRIGATION OF CONTAINER GROWN PLANTS. IT CAN BE USED IN BOTH AN UPRIGHT AND INVERTED POSITION.

ADVANTAGES OF NELSON'S UNIQUE ACME THREAD

1. Quick removal for cleaning plugged nozzles
2. Direct connection to Stake and Tube assemblies
3. Easy to add a regulator or a check valve
4. Quickly cap a riser using Acme Cap #10615
5. Multiple adapters available: (3/8", 1/2", 3/4" MNPT) and (1/2", 3/4", 25mm socket)
6. Quick **DETACHABLE** riser extensions use the Acme thread

HIGHLY-VERSATILE DETACHABLE RISER CONFIGURATION

Detachable risers are used to temporarily raise the mounting height of the MS10 when needed. Glue the Nelson #10352 1/2" Female Acme x 1/2" PVC Spigot into a 1/2" PVC Coupler on the bottom and the Nelson #10060-001 1/2" Male Acme x 1/2" PVC Socket with a piece of 1/2" schedule 40 PVC in between to construct the riser extension.



1/2" Male Acme X
PVC Socket Adapter

Fits on PVC Pipe.

3/4" - 10060-002



1/2" - 10060-001



1/2" Male Acme X
MNPT Adapter

3/4" - 9466



1/2" - 9316-002



Detachable
Riser
Extension

1/2" Male Acme X
1/2" PVC Socket
#10060-001

FEMALE ACME X
1/2" PVC SPIGOT
#10352
Enables easy
attachment
to a 1/2" PVC riser.

Riser Extension

MS10/HIGH ANGLE BLACK PLATE

Part numbers	Nozzle	Connection
13827-2212	#12 Purple 2TN	Acme
13827-2213	#13 Yellow 2TN	Acme
13827-2214	#14 Green 2TN	Acme
13827-2215	#15 Tan 2TN	Acme
13827-2216	#16 Red 2TN	Acme
13827-2217	#17 Turquoise 2TN	Acme
13827-2218	#18 Gold 2TN	Acme
13827-2220	#20 Brown 2TN	Acme
13827-1212	#12 Purple 2TN	1/2" MNPT
13827-1213	#13 Yellow 2TN	1/2" MNPT
13827-1214	#14 Green 2TN	1/2" MNPT
13827-1215	#15 Tan 2TN	1/2" MNPT
13827-1216	#16 Red 2TN	1/2" MNPT
13827-1217	#17 Turquoise 2TN	1/2" MNPT
13827-1218	#18 Gold 2TN	1/2" MNPT
13827-1220	#20 Brown 2TN	1/2" MNPT

MS10 PRELIMINARY PERFORMANCE

HIGH ANGLE BLACK PLATE	PRESSURE (PSI)											
	15		20		25		30		35		40	
2TN Nozzle	GPM	RAD.	GPM	RAD.	GPM	RAD.	GPM	RAD.	GPM	RAD.	GPM	RAD.
#12 Purple	0.99	14	1.14	15	1.27	16	1.39	16	1.50	16	1.61	16
#13 Yellow	1.16	16	1.34	17	1.50	18	1.64	19	1.78	19	1.90	19
#14 Green	1.32	18	1.52	19	1.70	20	1.85	21	2.00	21	2.15	21
#15 Tan	1.53	20	1.77	21	1.98	22	2.17	23	2.35	23	2.53	23
#16 Red	1.77	21	2.04	23	2.28	24	2.50	25	2.70	25	2.89	25
#17 Turquoise	2.03	22	2.34	24	2.62	26	2.87	26	3.08	26	3.28	26
#18 Gold	2.26	23	2.61	25	2.92	27	3.20	27	3.44	27	3.68	26
#20 Brown	2.75	24	3.18	26	3.56	27	3.90	27	4.18	27	4.48	26

Radius in Feet, GPM = Flow in gallons per minute
Radius is measured with a 24" (0.61 m) sprinkler riser.

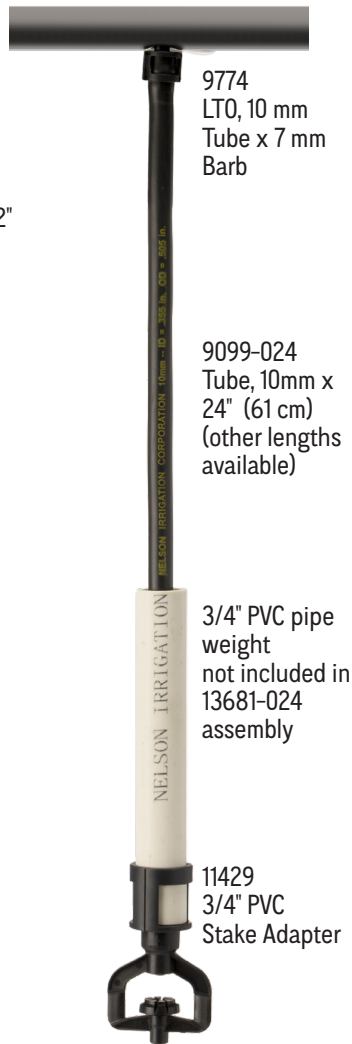
PRESSURE (BAR)															
1		1.25		1.5		1.75		2		2.25		2.5		2.75	
LPH	RAD.	LPH	RAD.	LPH	RAD.	LPH	RAD.	LPH	RAD.	LPH	RAD.	LPH	RAD.	LPH	RAD.
220	4.2	247	4.5	269	4.7	291	4.9	310	5	329	5	348	5	365	4.9
259	4.8	290	5.1	318	5.3	343	5.5	366	5.6	390	5.7	411	5.7	431	5.6
294	5.4	329	5.7	360	5.9	389	6.1	413	6.2	439	6.3	465	6.4	488	6.4
342	5.9	383	6.2	420	6.5	453	6.7	485	6.9	515	7	547	7	574	7
395	6.3	441	6.7	483	7.1	522	7.3	558	7.5	592	7.6	625	7.7	655	7.6
453	6.6	506	7.1	555	7.5	600	7.8	641	8	675	8	709	8	744	7.8
505	6.9	564	7.5	619	8	668	8.3	715	8.4	754	8.4	796	8.2	835	7.9
615	7.3	688	7.7	754	8	815	8.2	871	8.3	917	8.3	969	8.1	1016	7.9

Radius in Meters, LPH = Flow in liters per hour




UPRIGHT 9737-048 FT5, Adapter & LTO Assembly, 10mm X 48" (122 cm) Tube



INVERTED 13861-024 3/4" PVC-10, Adapter & LTO Assembly



ALSO USE WITH 1/2" MINI REGULATOR/DRAIN CHECKS

MINI REGULATOR DRAIN CHECK	MINI REGULATOR	MINI DRAIN CHECK	
 Pressures (-0xx) 20 PSI (-020) 30 PSI (-030) 35 PSI (-035) 40 PSI (-040) 45 PSI (-045) 50 PSI (-050) 60 PSI (-060)		 Pressures (-0xx) 20 PSI (-020) 35 PSI (-035)	
CONNECTION (INLET X OUTLET)	MRDC	MR	MDC
1/2" FNPT Inlet x Acme Outlet	*10406-0xx	*10020-0xx	*11140-0xx
Acme Inlet x Acme Outlet	*10407-0xx	*10099-0xx	*11139-0xx
1/2" FNPT Inlet x 1/2" MNPT Outlet	*11150-0xx	*11146-0xx	*11154-0xx

MINI REGULATOR DRAIN CHECK: Regulates pressure AND opens 2-5 PSI below nominal pressure (reduces effect of drain down).*

MINI REGULATOR: Regulates pressure only.*

MINI DRAIN CHECK: Opens 2-5 PSI below nominal pressure (reduces effect of drain down).

Maximum flow is 5 GPM.
*Note: MR require 5 PSI above nominal pressure for correct operation.
Application notes: R10/R2000 directly connect.



HIGH ANGLE ROAD GUARD
#9879 converts MS10 to
part-circle operation (200°).



1/2" ACME CAP
#10615 connects to
Acme thread and acts
as a shutoff cap.

WARRANTY AND DISCLAIMER: Nelson MS10 sprinklers and accessories are warranted for one year from the date of original sale to be free of defective material and workmanship when used within the working specifications for which the products were designed and under normal use and service. The manufacturer assumes no responsibility for installation, removal or unauthorized repair of defective parts and the manufacturer will not be liable for any crop or other consequential damages resulting from any defects or breach of warranty. THIS WARRANTY IS EXPRESSLY IN LIEU OF ALL OTHER WARRANTIES, EXPRESS OR IMPLIED, INCLUDING THE WARRANTIES OF MERCHANTABILITY AND FITNESS FOR PARTICULAR PURPOSES AND OF ALL OTHER OBLIGATIONS OR LIABILITIES OF MANUFACTURER. no agent, employee or representative of the manufacturer has authority to waive, alter or add to the provisions of this warranty nor to make any representations or warranty not contained herein.
www.nicpat.com